

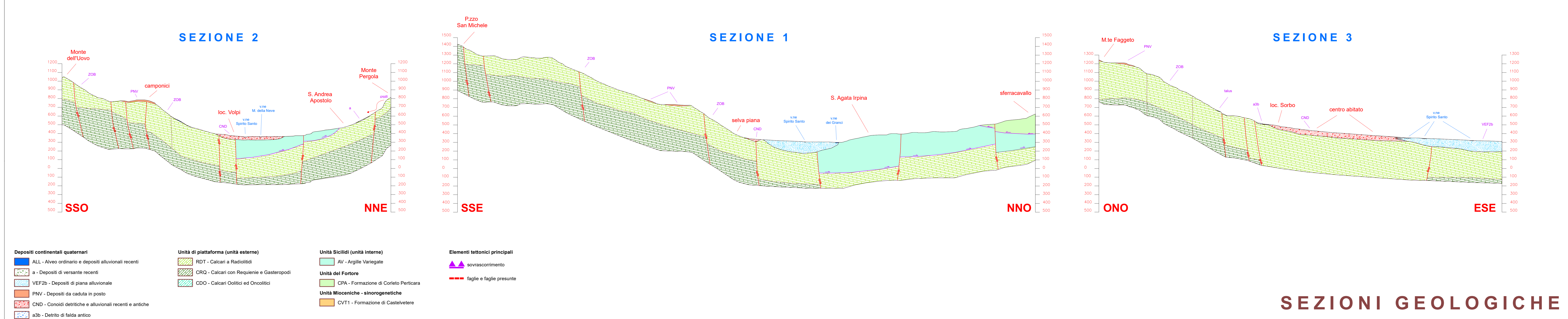
TAV. 7.0 - SEZIONI GEOLOGICHE IDROGEOLOGICHE e SISMICHE
 SCALA 1:15.000

maggio 2015

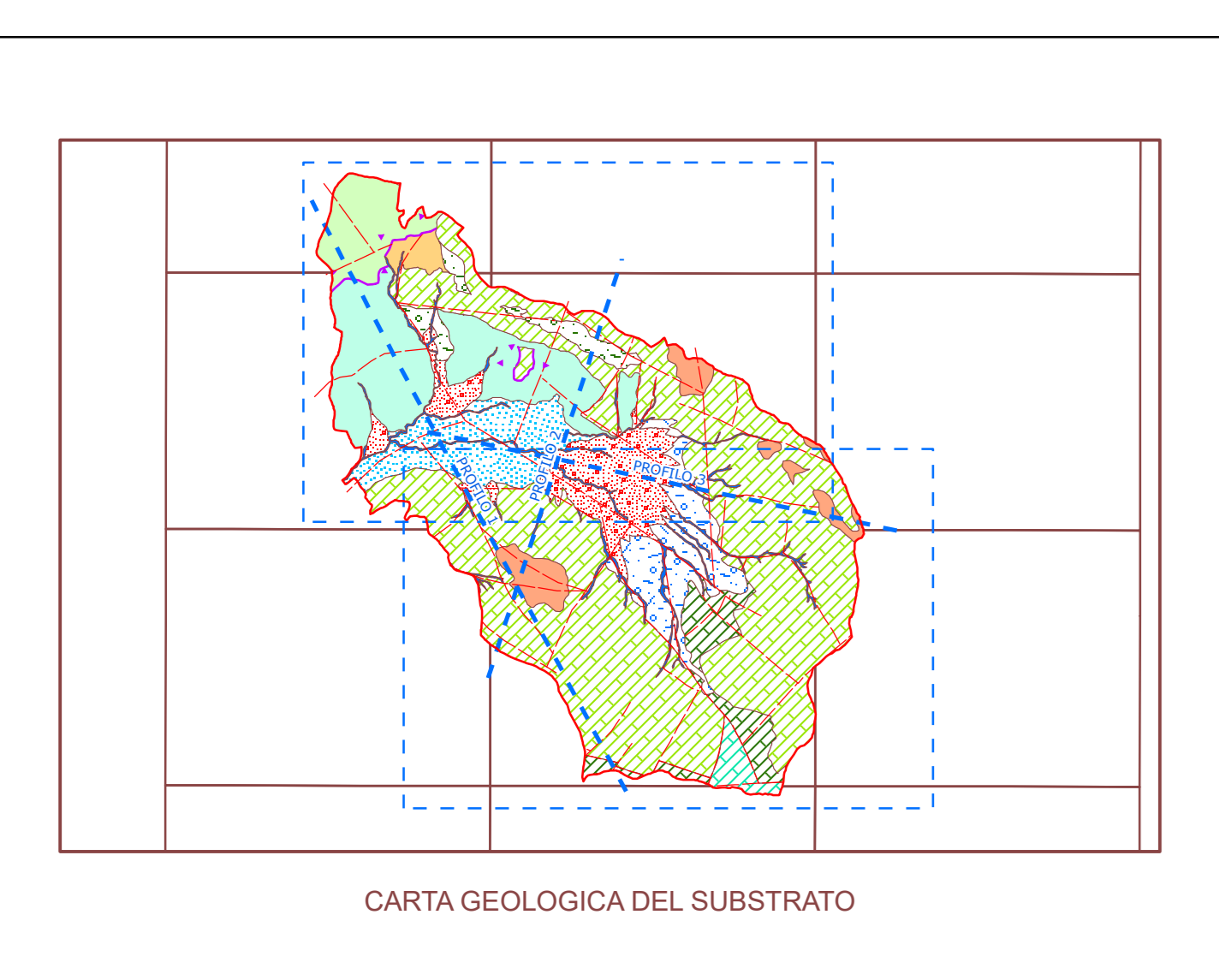
Il SINDACO
 Michele VIGNOLA

Il Tecnico incaricato
 Il R.U.P.
 Ing. capo U.T.C.
 Ennio TARANTINO

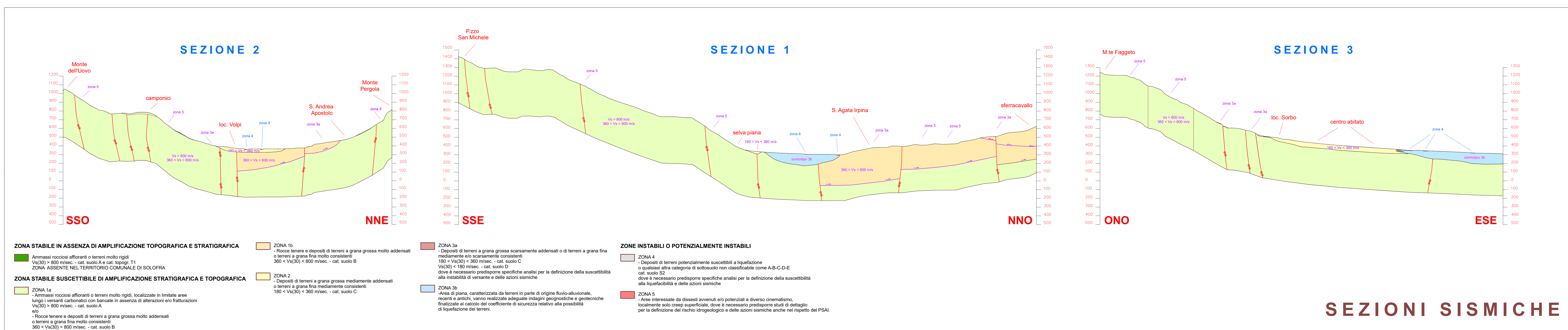
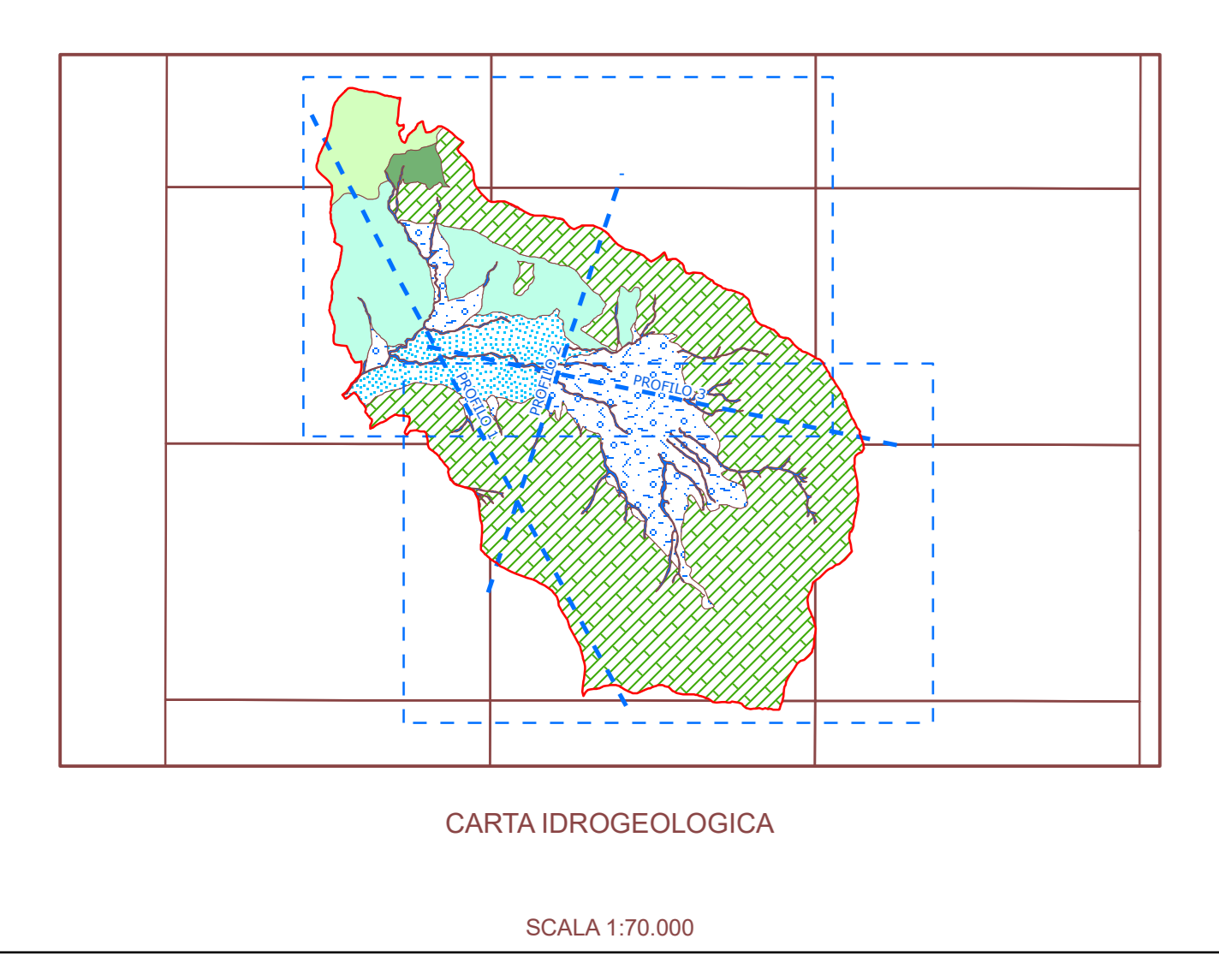
GEOMORFOLOGO - via Tuoro Cappuccini, 81 - 83100 Avellino - mb. +39. 339.4103763 - geologodorsi@gmail.com



SEZIONI GEOLOGICHE



SEZIONI IDROGEOLOGICHE



SEZIONI SISMICHE